

# Enova

Design, calculations and manufacturing  
of **Storage Systems**



## WIDE SPAN SHELIVING

The **Strength** of simplicity





We have a background of more than **50 years of knowledge** in the design and manufacturing of Storage Systems. We have consolidated and strengthened our position based on the humility and freshness of a young and specialized team, which added to our latest generation technologies, makes **ESNOVA** enjoy the trust and confidence of our worldwide customers.



WE EXPORT TO OVER THAN **35 COUNTRIES**



## EXPERIENCE

We have a large group of professionals with a long career in the logistics sector.

Design, calculations and manufacturing of **Storage Systems**

We can give you an efficient and direct response. We count with a large variety of references in stock for delivery in a few days and we adapt to special requirements for any type of business and storage. From the lightest shelving to the most sophisticated automatic storages.

We always offer efficient storages by studying each case and adapting the best solution for it:

- Optimize the available space.
- Increase storage capacity.
- Make the square metre of storage more profitable.
- Provide a more logical order for easy location and greater protection against damages and losses.
- More security for staff and facilities.
- Generate higher productivity in operations and resources.
- Offer a better service to our customers.

## SOLUTIONS



Industrial racking/shelving to store all types of products. Light, medium and heavy loads, palletised loads, big loads...

Standard Pallet Racking, Drive-in Racking, Cantilever, Rack-clad storage systems and automatic systems, Long Span racking, Boltless shelving (Riveto), Multi-tier shelving, mezzanines, metallic containers. All of them formed a great range of storage solutions which, together with our experienced team, will solve your storage problems with quality, safety and lower cost.



## Technology

Our machinery at your service. We are equipped with the most flexible and advanced production systems for the design and manufacture of parts, components and competitive metal products.

## Lab Tests

We have a Testing Laboratory where the performance of all different components of each system is verified by testing loads, resistance, buckling ...

## Innovation

Innovate to improve, both in **new products** and in the optimization of existing products.

## Quality



Esnova sets as a priority the quality standards in each and every one of the processes it develops.

- Certificate in the quality management system (ISO 9001).
- Certificate in the environmental management system (ISO 14001).
- Certificate in the occupational health and safety management system (ISO 45001).
- UNE EN 1090 Certificate of CE Marking.
- Member of the European Federation of Maintenance FEM/AEM.



Management System  
ISO 9001:2015  
ISO 14001:2015  
ISO 45001:2018  
[www.tuv.com](http://www.tuv.com)  
ID 9105076955





# WIDE SPAN SHELVING

## MANUAL STORAGE SYSTEM FOR MEDIUM AND HEAVY LOADS.

Direct access to the goods. Best to use when many different items and irregular rotation.

Great strength.

Easy and fast assembly.

Adjustable to different volume and cargo sizes.

Possibility to set up two-tier systems to optimize the warehouse space.









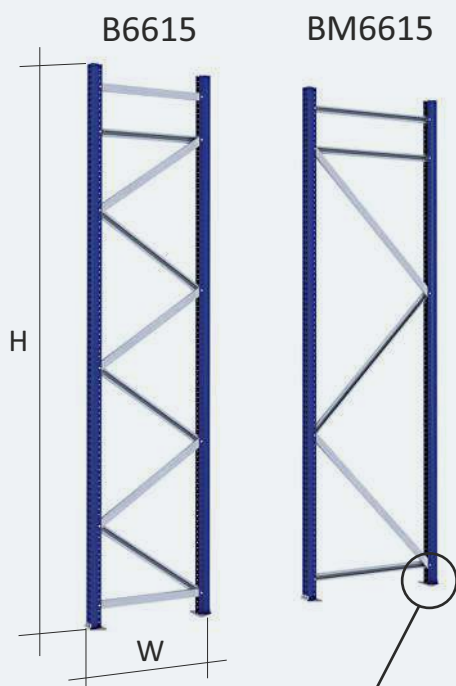
## SYSTEM COMPONENTS

### FRAMES

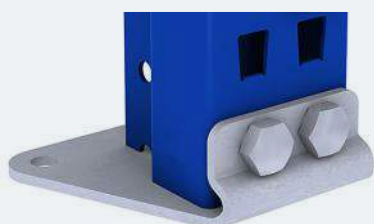
A frame consists of two perforated uprights, connected by a bracing made of horizontals and diagonals bolted to the uprights.

	B6615	BM6615
Min/Max Height H*	2500 / 5500 mm.	1500 / 3250 mm.
Frames Width w	400 - 600 - 800 - 1000 mm.	

\* The frames standard heights increase in steps of 250 mm.



### BASE PLATE MZ66



Base plate MZ66	
Thickness	3 mm.
Finishing	Pregalvanized



### UPRIGHT

Upright	
Finishing	
Blue 5019	Pregalvanized

### DIAGONALS HORIZONTALS



Upright	Dimensions	Thickness	Finishing
M6615	50 x 51,65	1,5	Blue 5019 Pregalvanized
M6618		1,8	
M6620		2,0	

Measures in mm.

## BEAMS

A beam is a strong horizontal member used to support the load. It's made of a Z profile with two welded connectors to both ends.

The connectors have stamped hooks every 25 mm. thus connecting them to the uprights front holes.



**BEAM Z35**



**BEAM ZG35**

Beam Z35 - ZG35	
Thickness	1,5 mm.
Connector	MC3
Standard Lengths (mm.)	890-1070-1250 1425-1605
Finishing	Orange 2004



**BEAM Z55e**



**BEAM ZG55e**

Beam Z55e - ZG55e	
Thickness	1,5 mm. - 1,8 mm.
Connector	MC3
Standard Lengths (mm.)	890-1070-1250-1425- 1605-1785-1960-2140
Finishing	Orange 2004



**BEAM Z65e**



**BEAM ZG65e**

Beam Z65e - ZG65e	
Thickness	1,8 mm. - 2 mm.
Connector	MC3
Standard Lengths (mm.)	1605-1785-1960 2140-2315-2500-2675
Finishing	Orange 2004



**BEAM Z85e**



**BEAM ZG85e**

Beam Z85e - ZG85e	
Thickness	2 mm.
Connector	MC4
Standard Lengths (mm.)	1605-1785-1960 2140-2315-2500-2675
Finishing	Orange 2004

## BEAM GRAN MILANO



Beam Gran Milano	
Thickness	1,5 mm.
Connector	MC3
Standard Lengths(mm.)	890-1070-1250 1425-1605-1785
Finishing	Orange 2004

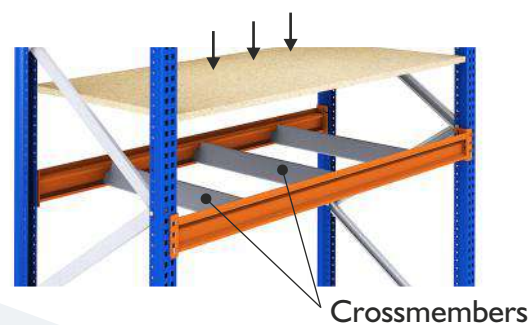
## BEAM MV



Beam MV	
Thickness	2 mm. - 2,3 mm. - 3 mm.
Standard Lengths (mm.)	890-1070-1250 -1425
Finishing	Orange 2004 Pregalvanized

## CROSSMEMBER

Element designed to carry loads, it is placed on two beams of the same shelf without the need of joining elements.



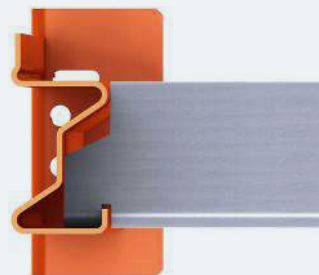
### ■ Crossmember T35

Designed to be used together with beams Z35 y ZG35.



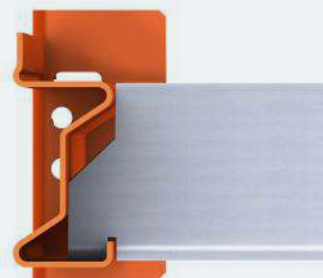
### ■ Crossmember T55

Designed to be used together with beams Z55e y Zg55e.



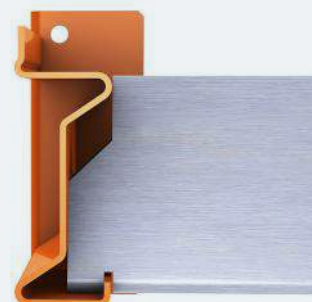
### ■ Crossmember T65

Designed to be used together with beams Z65e y Zg65e.



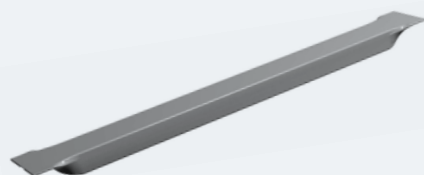
### ■ Crossmember T85

Designed to be used together with beams Z85e y Zg85e.



### ■ Crossmember RM42

Designed for use with all beams.



#### Crossmembers

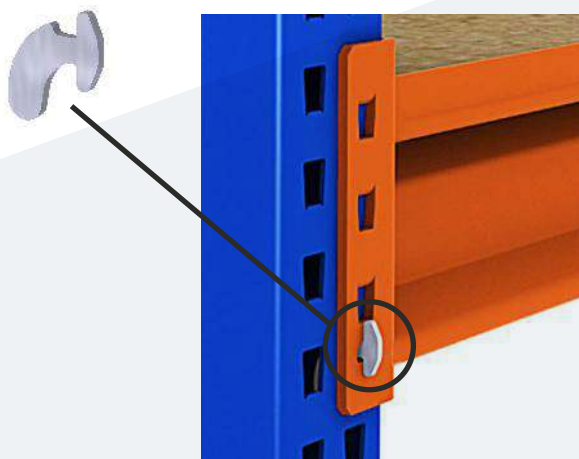
Finishing

Pregalvanized



## SAFETY CLIP CRM

Element designed to avoid accidentally disengaging of beams.

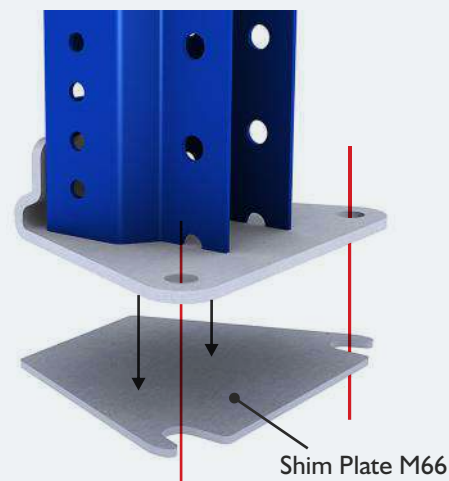


**Safety Clip CRM**

Finishing	Pregalvanized
-----------	---------------

## SHIM PLATE M66

Element designed to help levelling of frames.

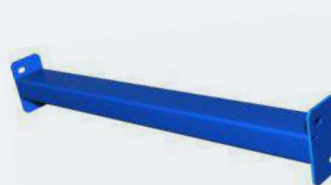


**Shim Plate M66**

Finishing	Pregalvanized
-----------	---------------

## FRAMES SPACER

Joining element bolted to two frames placed at the same level to maintain a constant distance between two alignments of modules.



**Frames Spacer DC50**

Finishing	Blue 5019
-----------	-----------



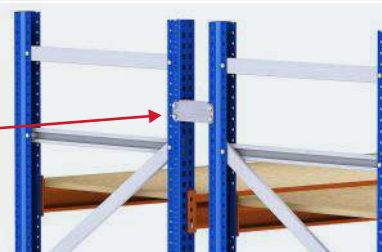
Lengths (mm.)

50 - 100 - 150 - 200 - 300 - 400 - 500



**Frames Spacer M66**

Finishing	Pregalvanized
-----------	---------------



## CHIPBOARD PANELS

Chipboard panels designed to fit perfectly in each bay.

They lean on the beams.

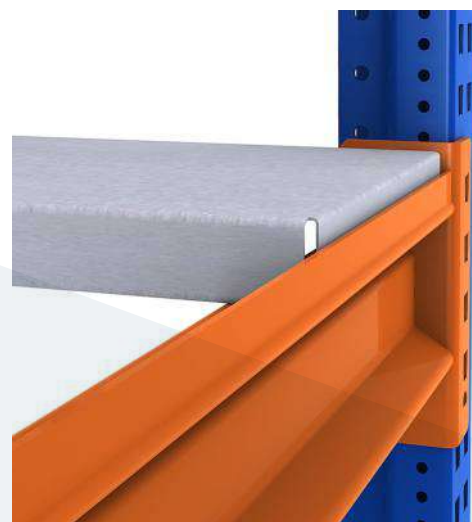
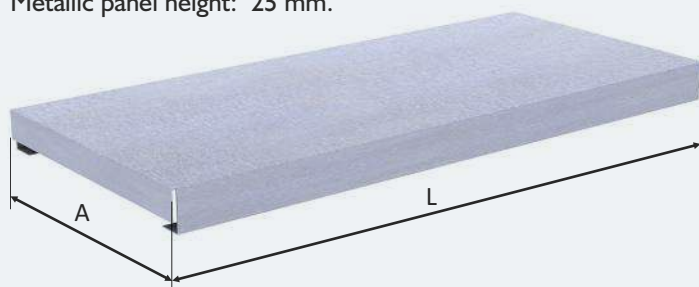




## METALLIC PANELS M66

Metallic panels manufactured in pregalvanized steel 0,8 & 1 mm. thick, easy to clean and corrosion-free.

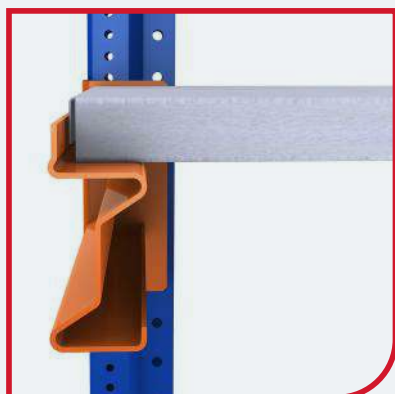
Metallic panel height: 25 mm.



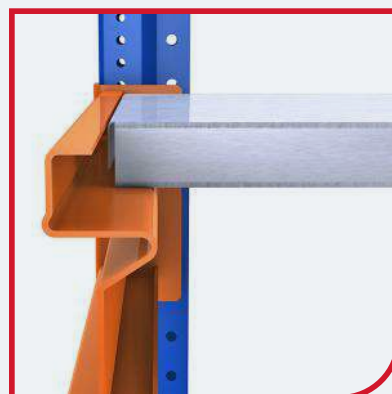
Frame Depth (mm.)	L (mm.)	A (mm.)
400	402	178
600	602	178
800	802	178
1000	1002	178

Standard Beam Lengths (mm.)											
	890	1070	1250	1425	1605	1785	1960	2140	2315	2500	2675
N° Panels	5	6	7	8	9	10	11	12	13	14	15

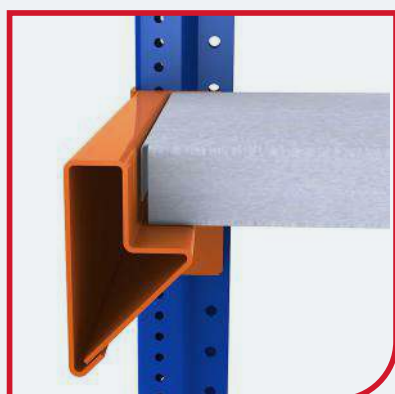
PANEL POSITION WITH  
BEAMS Z



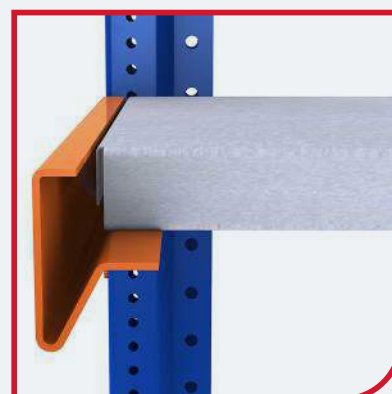
PANEL POSITION WITH  
BEAMS ZG



PANEL POSITION WITH  
BEAMS GRAN MILANO



PANEL POSITION WITH  
BEAMS MV

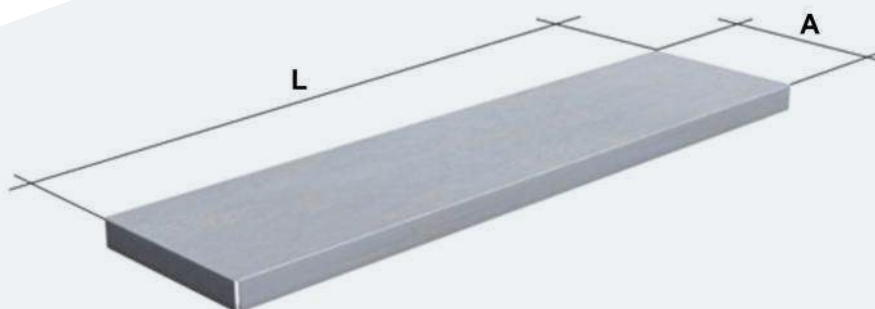




## SHELVES SZ

It can be used with all kind of beams.

There are two options to install the SZ shelves: perpendicular to the beams and the M66 steel panels, or with only one shelf covering the whole cell surface.



Width "A" (mm.)	Length "L" (mm.)
250 - 300 - 400 - 500 - 600	500 to 1200

Automatic mode manufacturing

Shelf SZ	
Finishing	Pregalvanized



**PERPENDICULARS SHELVES  
TO THE BEAMS**

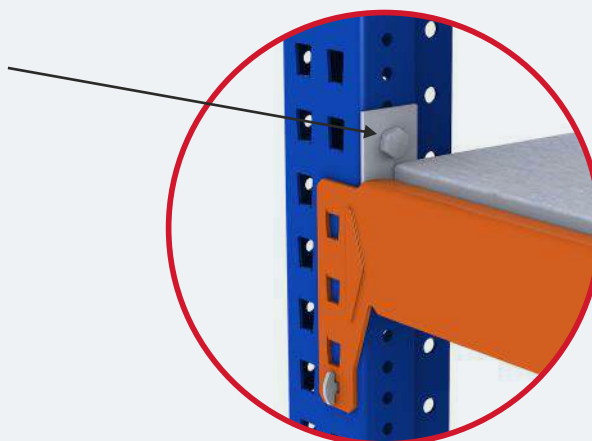


**ONLY ONE SHELF  
(COVERING THE WHOLE CELL)**

## SUPPORT PLATE MV/Z

In order to avoid the shelves to fall into the gap between the beam and upright support, small support plates will be placed.

Support Plate MV/Z	
Finishing	Pregalvanized







The **Strength** of simplicity

WE DESIGN AND MANUFACTURE STORAGE SYSTEMS  
FROM THE MOST BASIC OPTION TO THE MORE SOPHISTICATED ONE.



PLEASE ASK FOR OUR  
**CATALOGUES** OR DOWNLOAD  
THEM FROM OUR WEBSITE

[www.esnova.com](http://www.esnova.com)



Management  
System  
ISO 9001:2015  
ISO 14001:2015  
ISO 45001:2018

[www.tuv.com](http://www.tuv.com)  
ID 9105076955



## ESNOVA SOFTWARE WHAREHOUSE MANAGEMENT SOFTWARE

### ¿HOW TO ORGANIZE A WHAREHOUSE?

This software specially designed to the warehouse management is the perfect IT tool to have a logistic control of your storage space.



**MULTI-DEVICE SOFTWARE**

**ESNOVA RACKS, S.A.**

C/ Ataúlfo Frieria "Tarfe", N° 5 · Pol. Ind. Los Campones - Tremañes - 33211 · Gijón (Asturias - Spain)

☎ +34 985 308 980

✉ [info@esnova.es](mailto:info@esnova.es)